

# Doorways to the West

THIS PROPERTY IS  
PROTECTED BY  
 **M.I. SECURITY**  
ELECTRONIC ALARM SYSTEM  
PHONE: (03) 9311 7322



**HAZCHEM**



**WRITTEN ORDER  
MUST BE GIVEN  
BEFORE  
JOB STARTS**



Stuart Murdoch

All images made within a  
10 kilometer radius of the  
Melbourne Central Business  
District, in the western  
suburbs of North  
Melbourne, Sunshine, and  
Brooklyn.













































































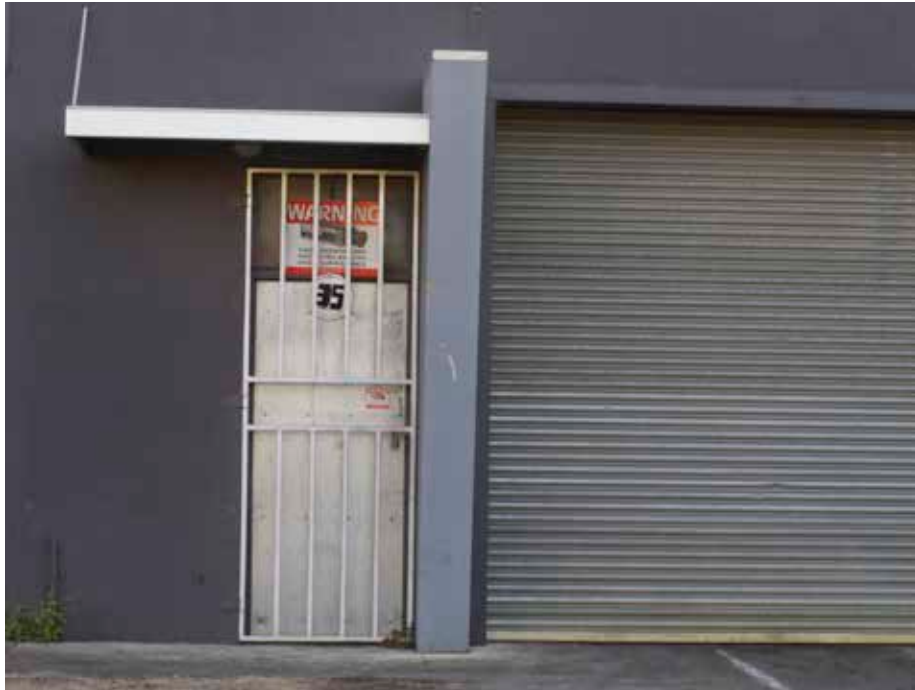












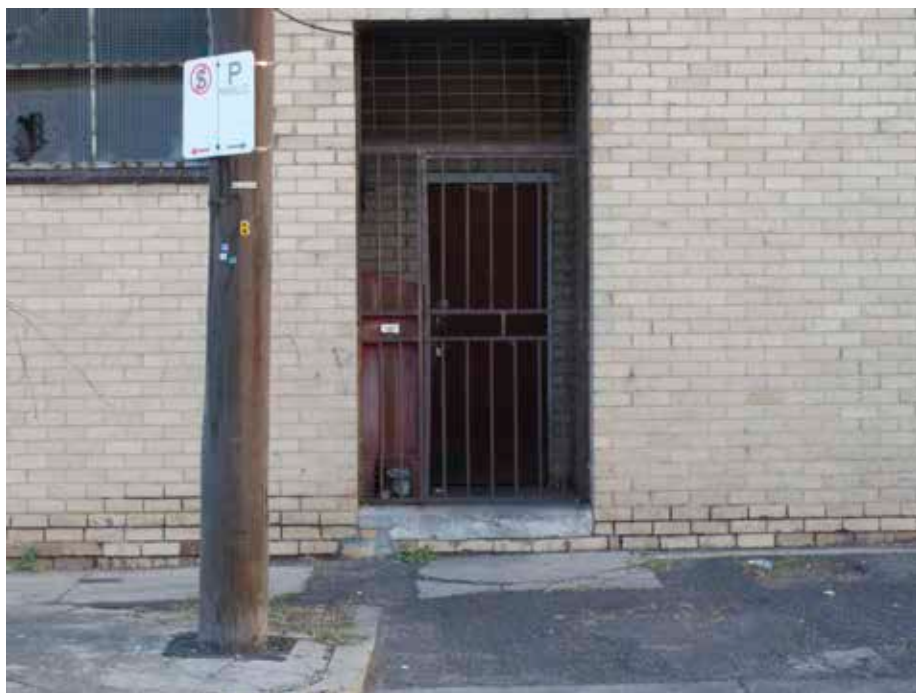
























































doorway |'dôr,wā|

noun

an entrance to a room or building through a door:

As western consumerism groans under the strain of cheap Asian mass production, once productive factories across Melbourne close or decrease production, their doorways lean and gaunt, like the factory floors they protect, testament to a once bustling industry of manufacture now in decline.

Doors protect, shield and guard, they also block and defend. Their duality is both obvious yet ignored, they may reveal much about their interiors or hide them from view. Can we learn something from these guardians, are they revelatory or secretive, can they reveal something about us or do they hide as much they reveal?

Each door has its own personality, each a new story to retell.

